

Artificial Intelligence (AI) & Local Government



Randy Mora, Esq., B.C.S.
Trask Daigneault, LLP



Biography

Alright, listen up! My name is Randy Mora, and by day I'm the legal powerhouse behind your local governments—serving as city attorney and stepping into the courtroom like it's my ring. I don't just draft ordinances—I drop legal elbows on litigation! Whether it's advising city councils or throwing down in court, I bring the same intensity, strategy, and sharp moves you'd expect from a title match. And today, I'm here to lay the smackdown... with knowledge.



AI Prompt

I am a lawyer who represents local governments as their city attorney and in litigation. I also do public speaking. Write me a brief introduction I can use when speaking to audiences. Make the tone as if I am a professional wrestler.



AI Defined

- Britannica.com – “[T]he ability of a digital computer or computer-controlled robot to perform tasks commonly associated with intelligent beings.”
- IBM uses a 2004 definition from John McCarthy – “It is the science and engineering of making intelligent machines, especially intelligent computer programs.”
 - What is artificial intelligence (AI)?, <https://www.ibm.com/topics/artificial-intelligence> (last visited September 8, 2023).
- “Artificial intelligence (AI) is technology that enables computers and machines to simulate human learning, comprehension, problem solving, decision making, creativity and autonomy.” (New definition as of August 9, 2024)



Types of AI

- **Weak AI vs. Strong AI**

“AI trained and focused to perform specific tasks.”

“Virtually all current A.I. programs are “weak A.I.”

- **Large Language Models (LLMs)**

Refers to a type of artificial intelligence (AI) trained on massive datasets of text and code to understand, generate, and manipulate human language, enabling applications like chatbots, content creation, and more

- **Generative AI**

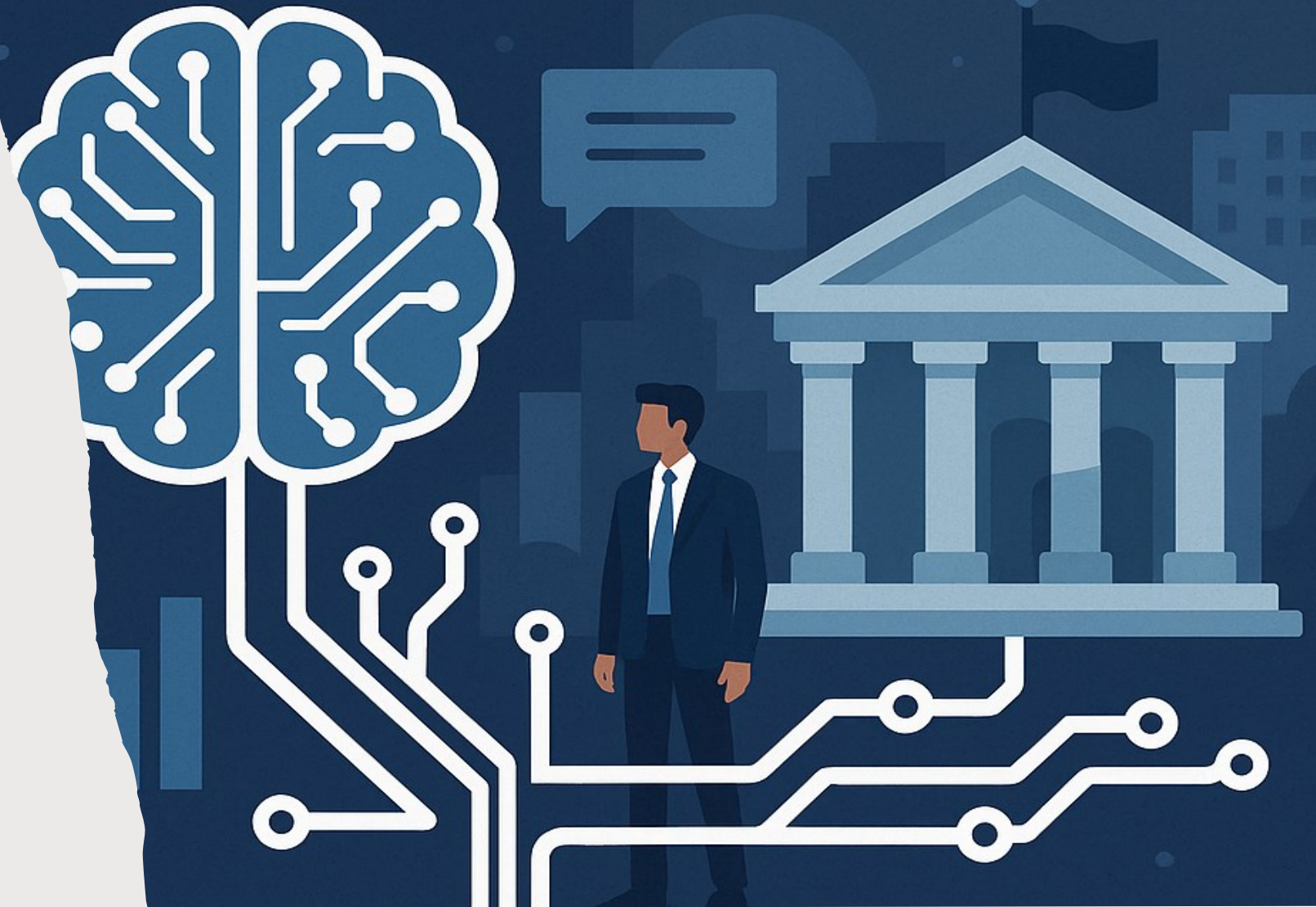
Refers to deep-learning models that can take raw data... and ‘learn’ to generate statistically probable outputs when prompted

- <https://medium.com/@v.mahadik/using-generative-ai-to-achieve-research-outcomes-f8b0847523a5>

**AI
TECHNOLOGY**

**LOCAL
GOVERNMENT**

**AI & Local
Government**



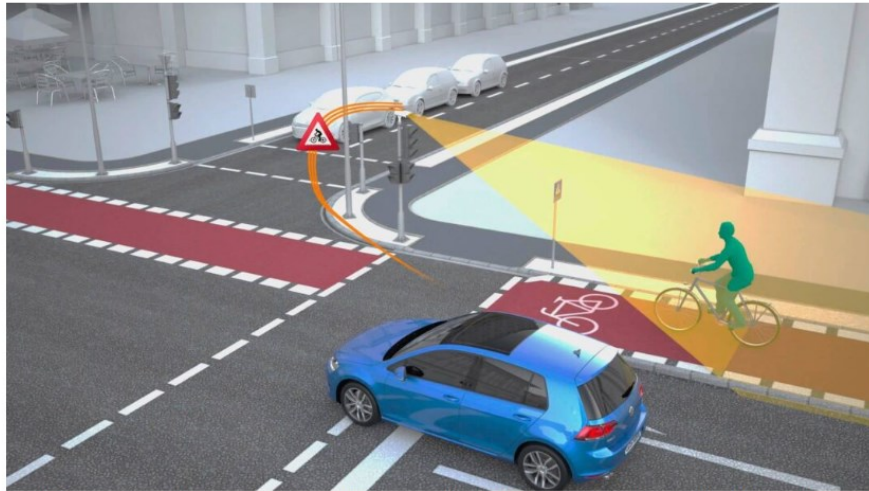
Local governments are using AI without clear rules or policies, and the public has no idea

AI-enabled 'Smart Signals' arrive in St. Petersburg



Published 2 weeks ago on April 4, 2025

By Mark Parker

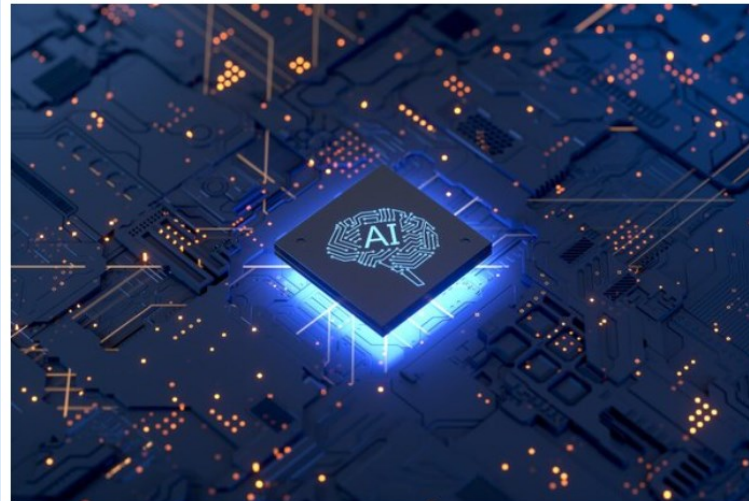


St. Petersburg is installing adaptive traffic signals that use artificial intelligence to detect, classify and track objects. Image: Volkswagen AG.

In Palm Beach County, Florida, document automation software employs deep learning algorithms and machine learning techniques to automate tasks such as document classification, data extraction, and data entry. Since its adoption in 2017, the county has saved approximately \$1.9 million annually by automating electronic document filings, speeding up processing, enhancing accuracy, reducing backlogs and paper waste and boosting judicial efficiency.

GenAI tool aims to streamline public sector processes

AI and Machine Learning 16 Apr 2025 by SmartCitiesWorld news team



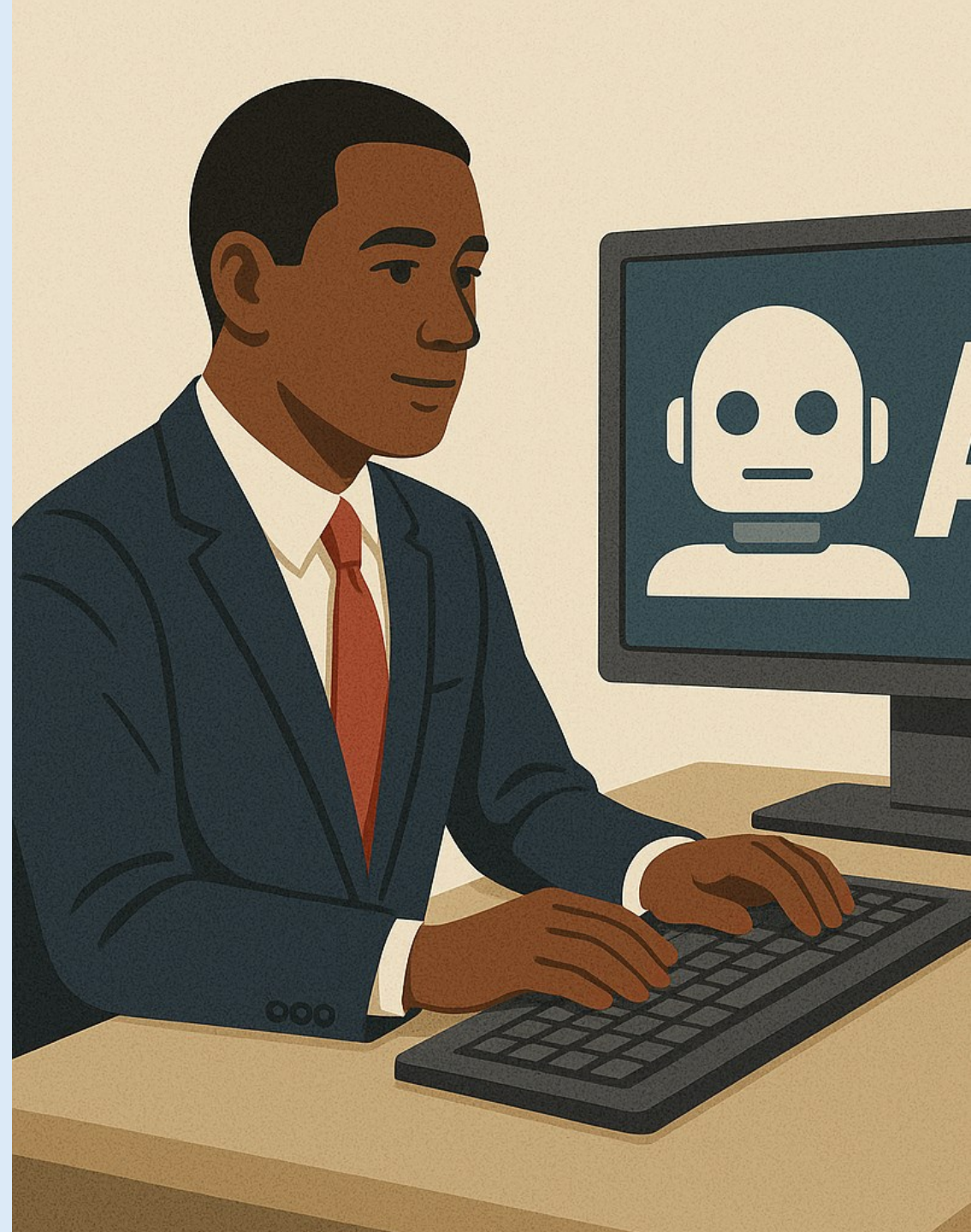


AI & Government Sample Uses

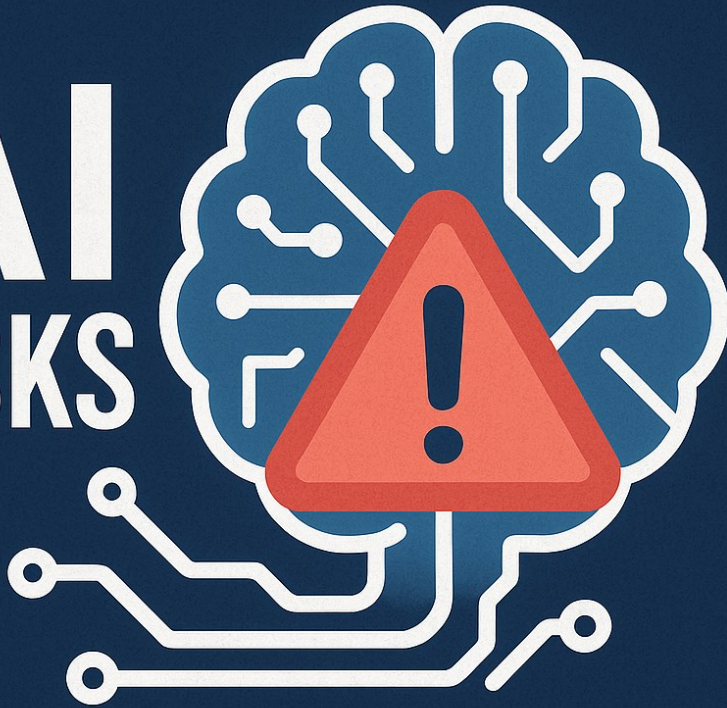
- Increased Efficiency
- Policy, Procedures, & Rules Review
- Data Summary (Text & Audio)
- Vibe Coding

AI & Government Legal Concerns

- **Public Office is a Public Trust**
 - Ethical violations & Systemic Biases
- **Public Records**
 - Drafts, Retention & Production
- **Sunshine Law**
 - “Effecting its remedial purpose”
 - AI Agents as proxies
- **Unregulated Use of Data**
 - Have a policy




AI RISKS



Risks of AI

- **Misinformation** – false or inaccurate information (hallucinations) A.I. programs have been known to have “hallucinations” where a response is created seemingly without any basis for support.
- **Disinformation** - false information which is intended to mislead, especially propaganda issued by a government organization to a rival power or the media. (deepfakes) Fraud
- **Copyright Infringements** - At present, AI generated images are not subject to copyright protections due to the lack of an “author,” and inventions are not subject to patent protections due to the lack of an “inventor.”
- **Data integrity/Reliability**

The background of the slide features a collage of paper cutouts. Several white head silhouettes are arranged in a layered, overlapping fashion. Many of these heads contain a large, black question mark. One head, positioned towards the center-right, contains a blue line drawing of a lit lightbulb. The cutouts are set against a teal-colored background, and the edges of the paper pieces are visible, giving a three-dimensional, layered effect.

CLOSING THOUGHTS

