

2019 STATE OF THE CITIES



STATE OF THE CITIES



For more than 90 years, the Florida League of Cities has been the voice for Florida's municipal governments. The League believes in **"local voices making local choices"** and the importance of recognizing and empowering municipalities.

Our membership consists of **more than 400 unique cities, towns and villages** in the Sunshine State – each one as diverse in geography, population and culture as the residents who call them home.

The *State of the Cities* report is an overview of the current state of Florida cities and, in some cases, how they have changed over the past eight years. These changes come as Florida's cities are embracing innovation, protecting local authority and providing a better quality of life for their residents.

The results in this report are based on the annual **CityStats survey** and the **MiniSurvey series**, produced by the Florida League of Cities Center for Municipal Research (CMR). The Center serves as the primary source of local government research and resources at the League. Data is collected from various research institutes across the state and nation as well as through the Center's surveys.

This report is a snapshot of some of the most notable highlights pulled from numerous CMR data analyses, which are available in full on the League's website or through request to CMR staff.

In Florida, a city, town or village is a municipal government. There is no legal difference between the three. In this document, the words "municipality" and "city" are used interchangeably. Unless otherwise noted, all stats are from the CMR CityStats surveys 2011-2019. All population data is obtained from the University of Florida's Bureau of Economic & Business Research, April 2018 estimates. All millage rate data is obtained from the Florida Department of Revenue.

TABLE OF CONTENTS

- 1 Introduction**
- 2 Budget, Employment & Economy**
 - 2 Budget**
 - 4 Employment**
 - 6 Economy**
- 7 Population & Governance**
 - 7 Population**
 - 9 Governance**
- 11 Facilities, Services & Utilities**
 - 11 City-run Facilities**
 - 12 City-run Services**
 - 13 Utility Services**
- 15 Public Safety**
 - 15 Consolidated Dispatch**
 - 16 Police & EMS**
 - 17 Fire**
- 18 Map of Regions Used for CityStats Analysis**
- 19 2019 CityStats Respondents**

Florida's cities, towns and villages are centers of economic, social and cultural energy. As the state's population and demographics change, so too do the needs of each city as new residents bring fresh perspectives, ideas and desires.

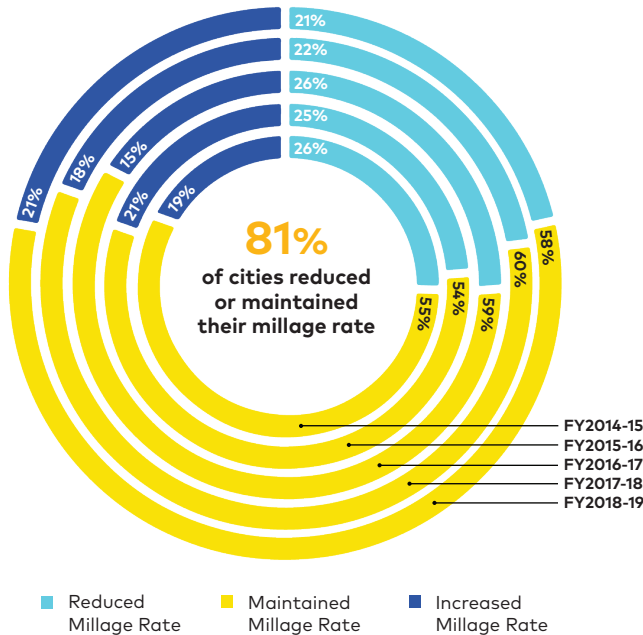
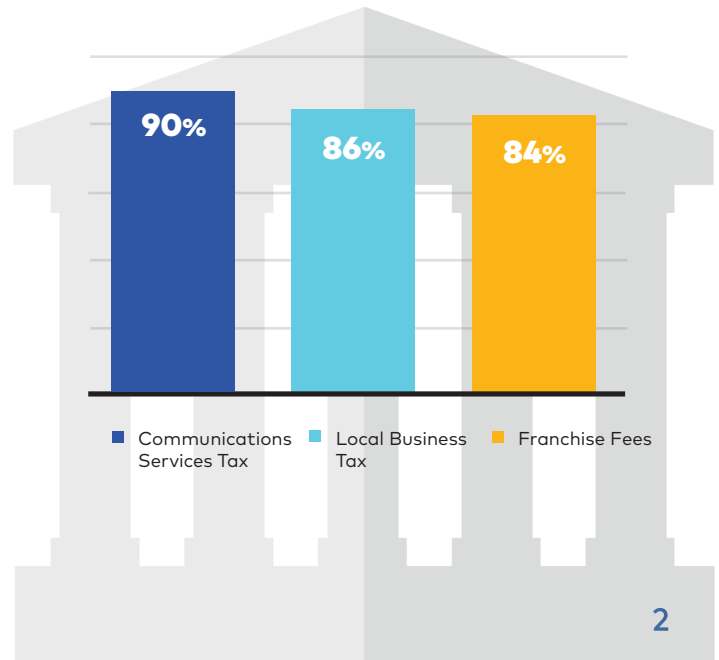
Cities strive to provide their services both efficiently and effectively. Each day, cities are solving problems, collaborating with their communities and identifying opportunities to improve the quality of life for their citizens.

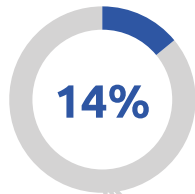
Our member cities reflect in their organization and activities the rich diversity of the residents who call them home. By allowing local voices to make local choices, we ensure cities have the resources and authority necessary to respond to the unique demands of their residents.

BUDGET

While property (ad valorem) tax is an important revenue source for most cities, it provides **less than half of the revenue** upon which municipalities rely statewide. Service taxes, permitting fees, franchise and impact fees, and state and federal grants, along with interest earnings, provide the largest share of most municipalities' revenue.

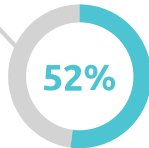
Commonly Used Municipal Revenue Sources
(3-year average percentage of city use)



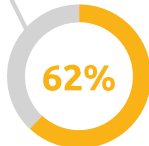


Only 14% of cities in **Northwest** and **Northeast Florida** use **non-ad valorem assessments** as a revenue source.*

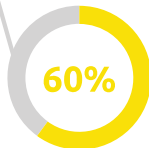
Other regions of the state utilize them as follows:



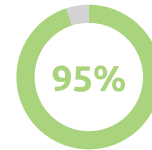
Central Florida



Southwest Florida



Southeast Florida



95% of cities **statewide** use **ad valorem (property tax)** as a revenue source

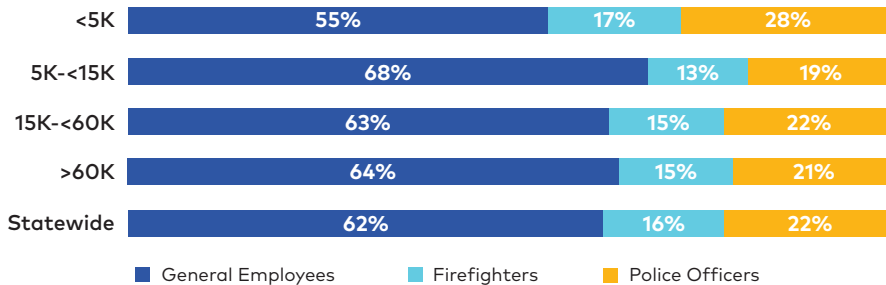
*See regional map, p.18.

EMPLOYMENT

Staffing levels in Florida cities vary greatly. The number of municipal employees needed to deliver services in each city is based not only on the city's population, but also on the number and level of services provided.

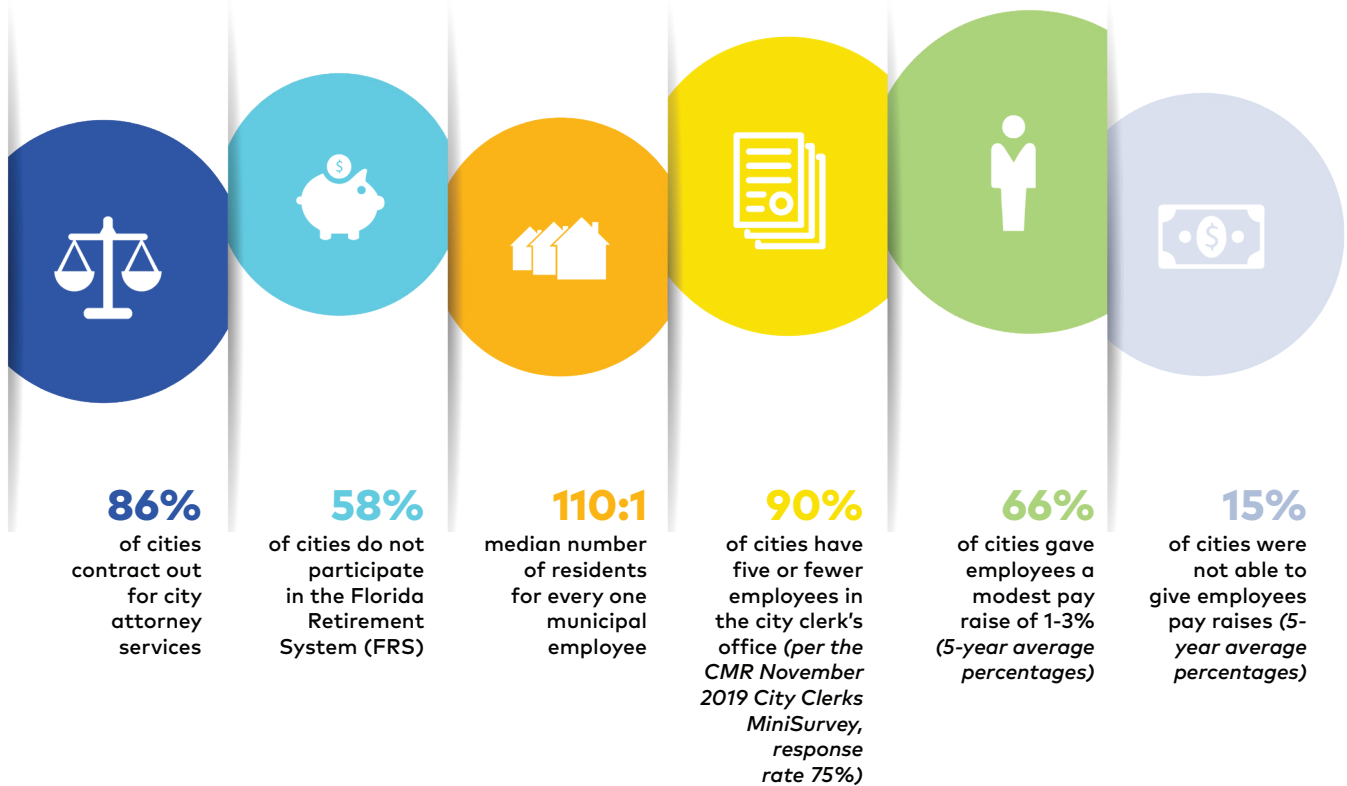
Cities, like all employers, must **compete for and retain a workforce** with the skills necessary to deliver the services their "customers" (residents, business and property owners, visitors) desire. **More than half** of Florida cities were able to provide pay raises of 1% to 3% in 2019 to enhance their ability to retain a skilled workforce.

Distribution of Full-time Municipal Employees by City Population
(percentage in 2019)



29% of cities have a position dedicated to **resiliency or sustainability work** or have a staff member with **resiliency and sustainability functions** included within their duties.

Per the CMR November 2019 Resiliency Officer Quick Survey, response rate 34%.



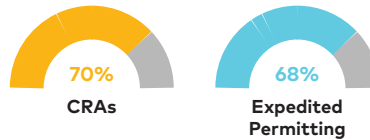
ECONOMY

Improving economic conditions for their cities and citizens is a multifaceted effort for municipal officials and staff. Economic development incentives to spur business growth can include **expedited permitting procedures, favorable development regulations** and **tax breaks**.

The two economic development tools most widely used by Florida cities:



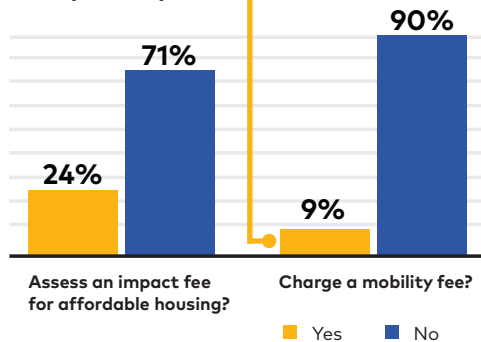
In cities with **populations greater than 60,000**, use of those economic development tools increases greatly.



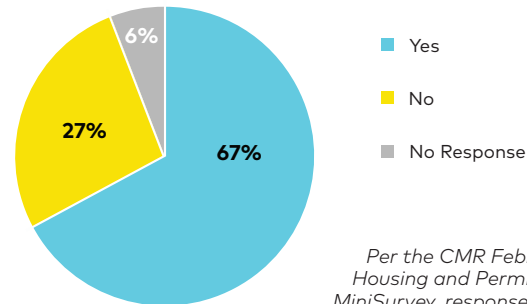
▶ **67%** of cities have **kept their permit fees the same** since 2016 as it relates to the Florida Building Code.

Per the CMR February 2019 Housing and Permitting Fees MiniSurvey, response rate 42%.

Does your city...



Is the mobility fee assessed for affordable housing?

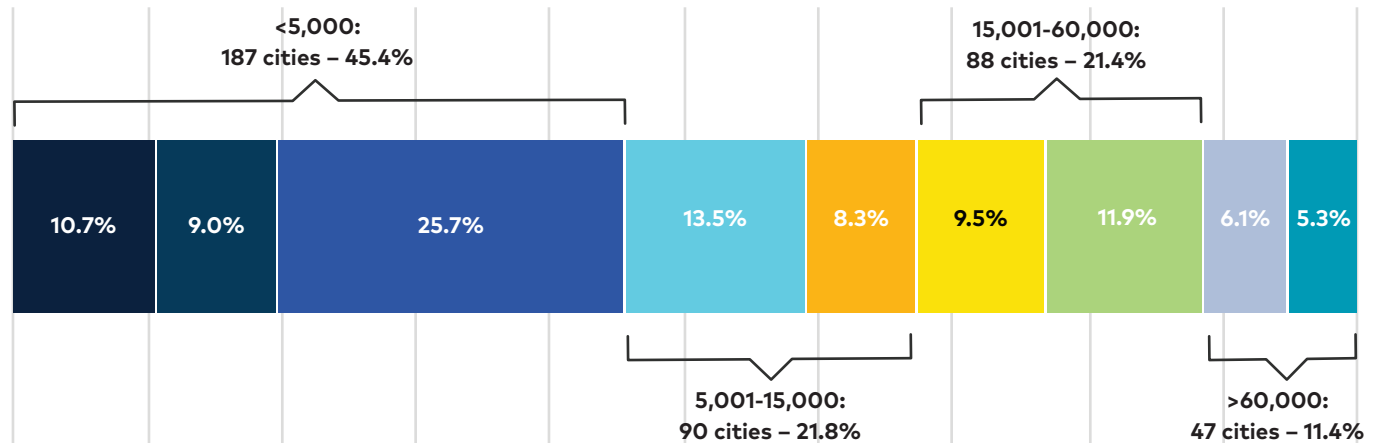


Per the CMR February 2019 Housing and Permitting Fees MiniSurvey, response rate 42%.

POPULATION

Florida is predominantly a state of **small cities**. The median population of the 412 cities in Florida for 2019 was 5,970. **Twelve new cities**, with a total population of more than 350,000, have been incorporated in Florida since 2000. Today, the majority of Floridians (50.7%) live in cities.

Cities Within Each Population Range



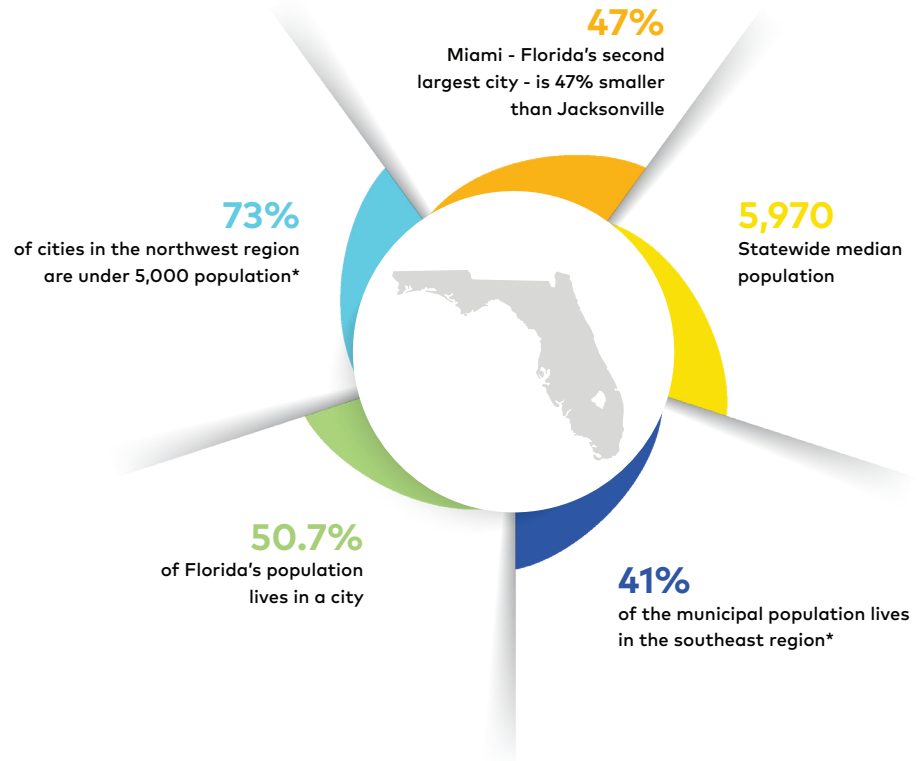
<500
 501-1,000
 1,001-5,000
 5,001-10,000
 10,001-15,000
 15,001-25,000
 25,001-60,000
 60,001-100,000
 >100,000

2019 Top 10 Largest Cities

Jacksonville	907,093
Miami	481,333
Tampa	378,531
Orlando	285,099
St. Petersburg	266,076
Hialeah	238,906
Tallahassee	192,381
Port St. Lucie	185,843
Fort Lauderdale	182,827
Cape Coral	180,204

2019 Top 10 Smallest Cities

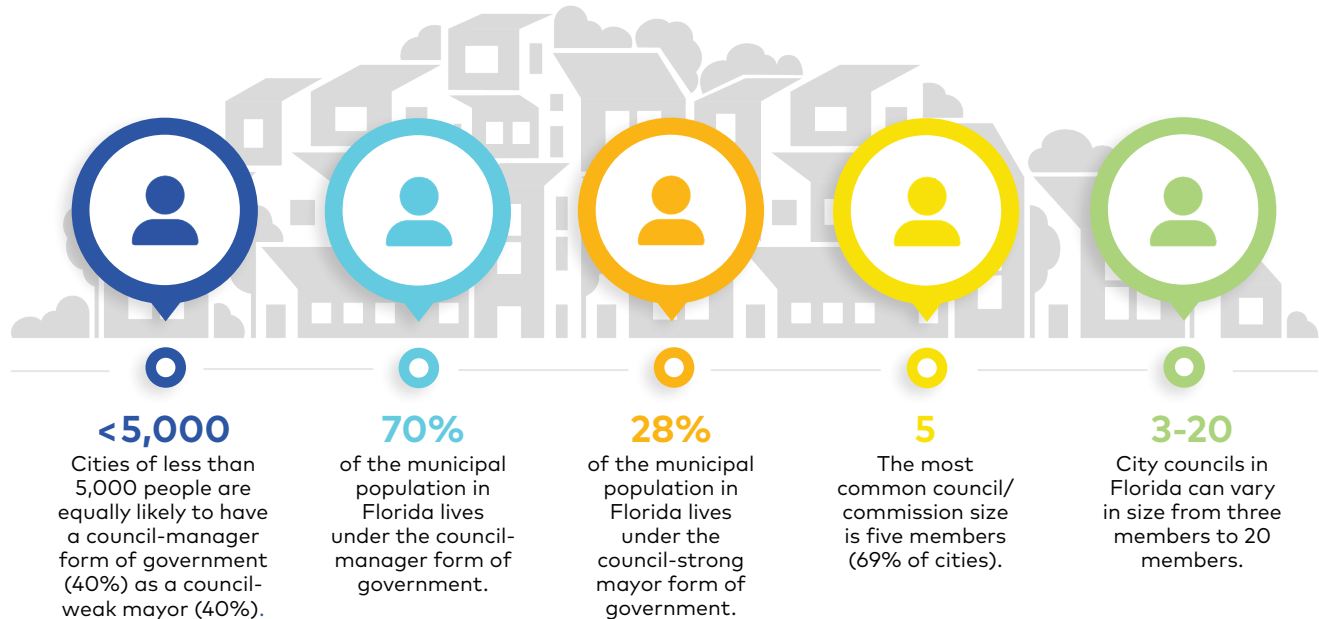
Marineland	8
Weeki Wachee	9
Bay Lake	22
Lake Buena Vista	24
Lazy Lake	26
Westlake	29
Indian Creek	84
Belleair Shore	118
Otter Creek	122
Bascom	125



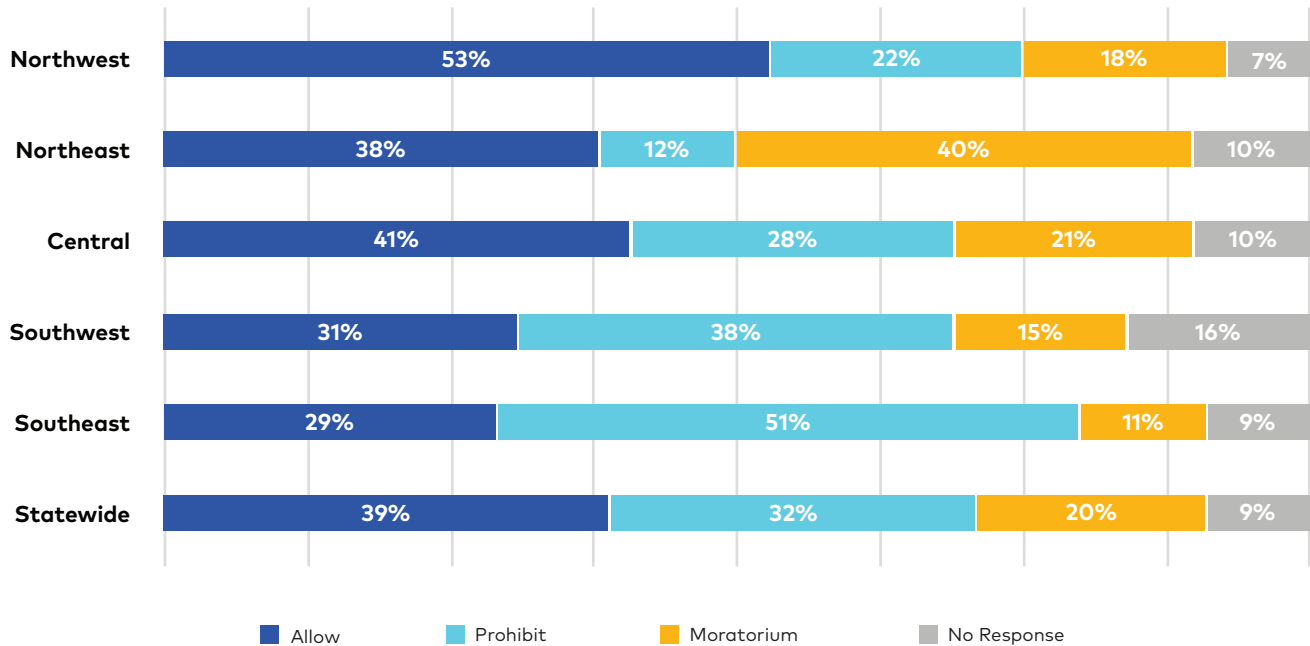
*See regional map, p.18.

GOVERNANCE

The citizens of a municipality determine through the **city charter** what form of government, governing body and election procedures work best for their communities. Statewide, the most prevalent form of city government is **council-manager** and the most common council/commission size is **five** members.



How Cities Are Handling Medical Marijuana Dispensaries



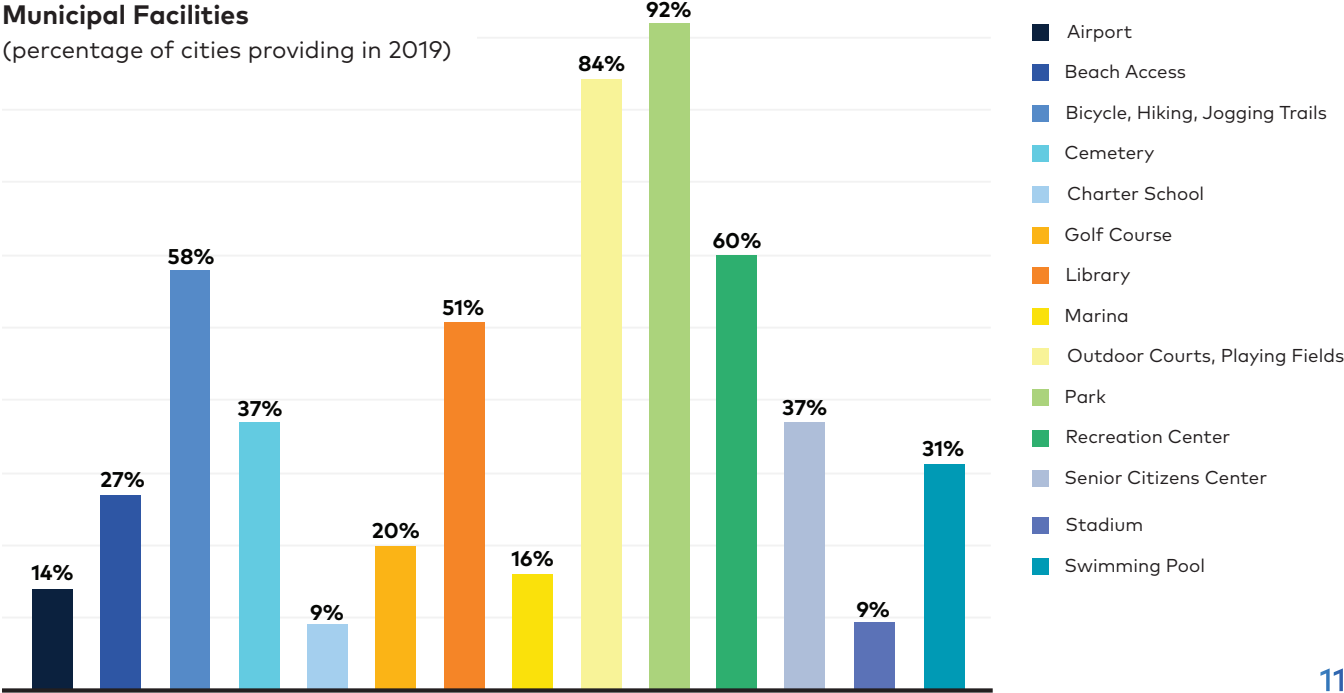
*See regional map, p.18.

CITY-RUN FACILITIES

New to the CityStats survey in 2019, we now have a snapshot of the variety of **city-owned facilities** across the state. While the majority of cities provide parks and other outdoor recreation areas, some cities also own and manage facilities ranging from airports to cemeteries to stadiums.

Municipal Facilities

(percentage of cities providing in 2019)

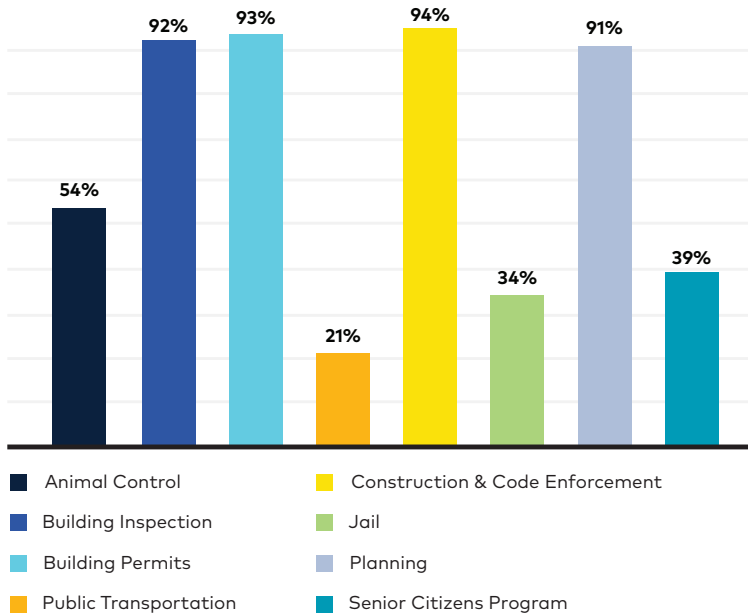


CITY-RUN SERVICES

Municipalities provide a wide **range of services** at varying levels, depending upon the needs and desires of their citizens.

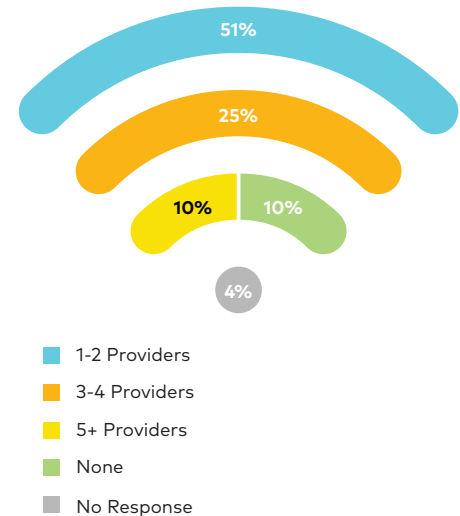
Municipal Services

(percentage of cities providing in 2019)



Broadband Providers Operating in Each City

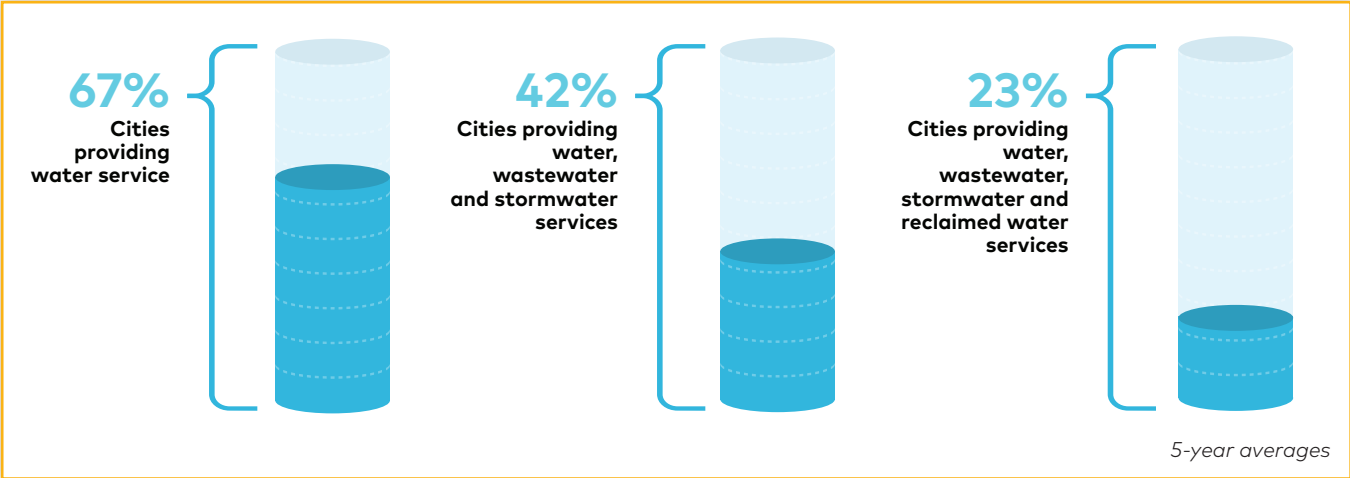
(percentage of cities with each option)



Per the CMR October 2019 Digital Divide MiniSurvey, response rate 33%.

UTILITY SERVICES

Most Floridians also rely upon cities for **basic and essential services** like water, sanitary sewers and stormwater management.



Cities providing water service to another jurisdiction



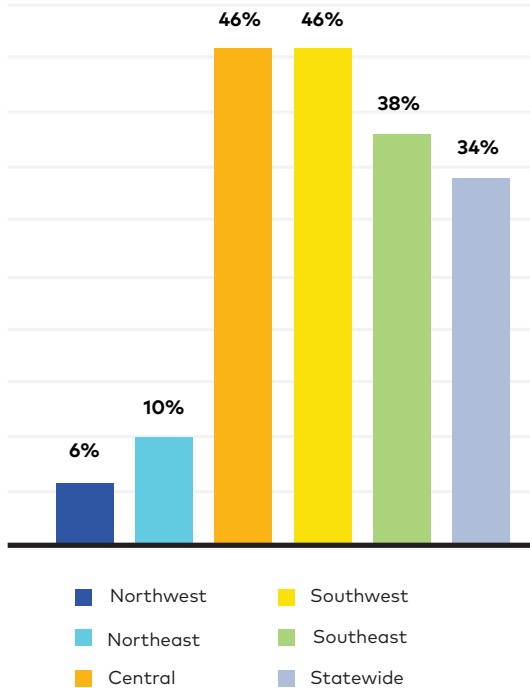
Cities providing wastewater service to another jurisdiction



22% cities providing curbside residential recycling

Cities with Fertilizer Ordinances

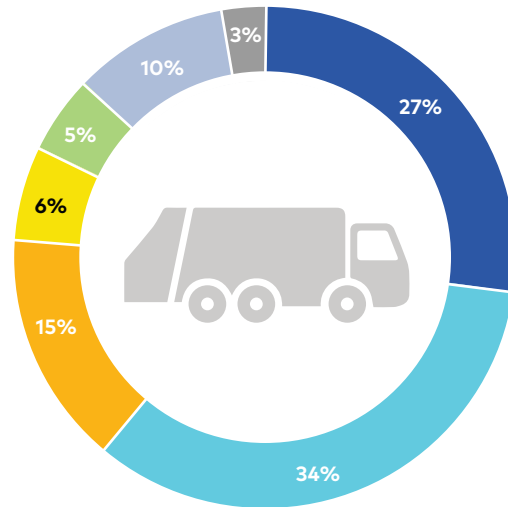
(percentage of cities in 2019)



*See regional map, p.18.

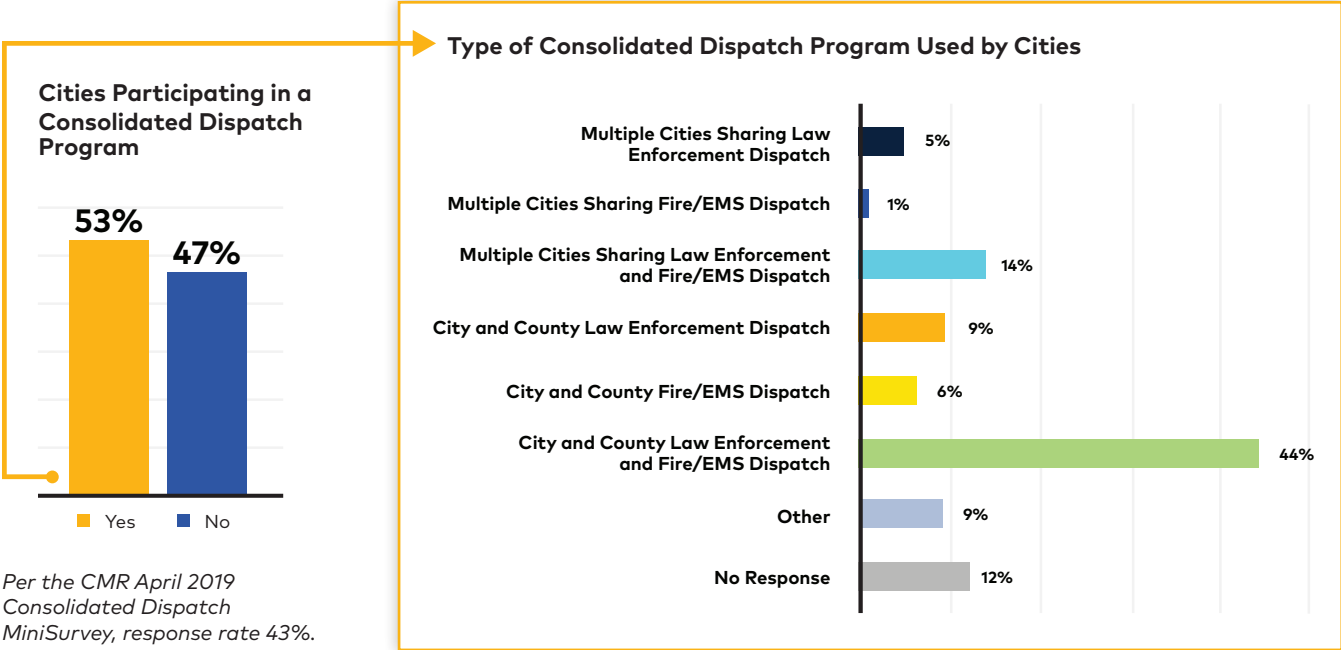
How Solid Waste Collection Services Are Provided

(5-year average percentage)



- City-Owned and -Operated
- City-Operated Through a Franchise Agreement
- Affiliated with Regional Independent Entity
- Obtained from Another Government Entity
- Combination of Above
- Not Applicable
- No Response

Public safety remains a priority for cities. Most provide **police, fire** and **emergency medical services**, whether directly with city employees or through contracts with other government agencies.

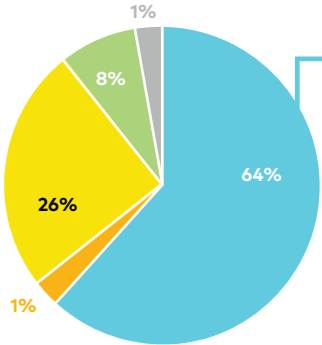




Police

How Police Services Are Provided (5-year average percentage)

- Directly by the City
- Contracted Out to Another City
- Contracted Out to County
- Not Provided
- No Response



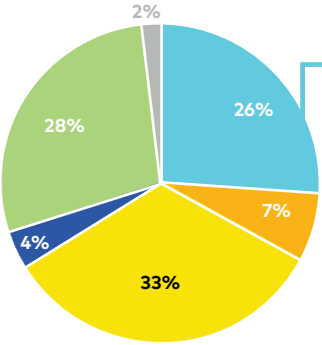
77% of cities in Southwest Florida provide police services directly*



EMS

How Emergency Medical Services Are Provided (5-year average percentage)

- Directly by the City
- Contracted Out to Another City
- Contracted Out to County
- Contracted Out to Private Entity
- Not Provided
- No Response



51% of cities with populations >15,000 provide EMS directly

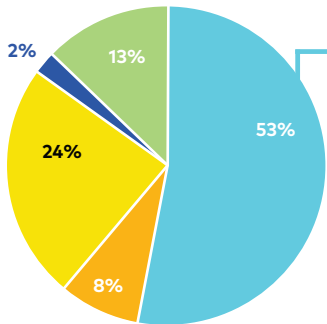
*See regional map, p.18.



Fire

How Fire Services Are Provided (5-year average percentage)

- Directly by the City
- Contracted Out to Another City
- Contracted Out to County
- Contracted Out to Private Entity
- Not Provided



83% of cities with populations **>60,000** provide fire services directly

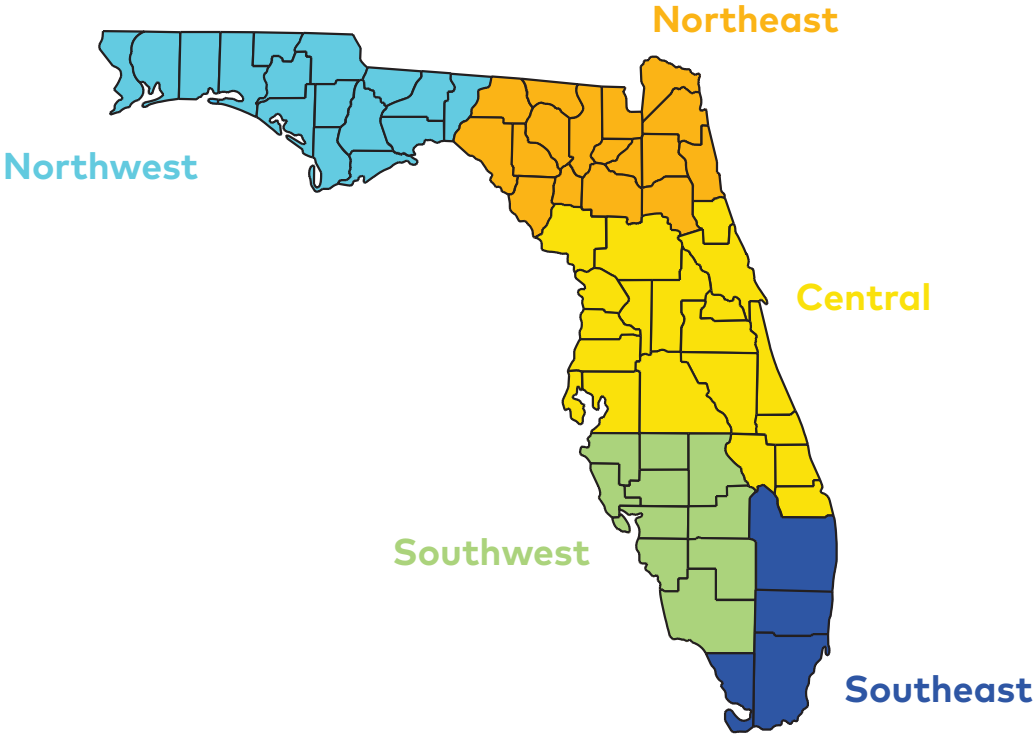
How Municipal Fire Departments Are Staffed (5-year average percentage)



39% of fire departments in **Northwest Florida** are all volunteers.*

*See regional map, p.18.

MAP OF REGIONS USED FOR CITYSTATS ANALYSIS



2019 CITYSTATS RESPONDENTS

Alachua	Branford	Cutler Bay	Glen Ridge
Anna Maria	Briny Breezes	Dade City	Glen Saint Mary
Apalachicola	Bristol	Dania Beach	Golden Beach
Apopka	Bronson	Davenport	Golf
Arcadia	Brooker	Daytona Beach	Graceville
Archer	Brooksville	Daytona Beach Shores	Grand Ridge
Astatula	Bunnell	Deerfield Beach	Grant-Valkaria
Atlantic Beach	Bushnell	DeFuniak Springs	Green Cove Springs
Atlantis	Callahan	DeLand	Greenacres
Auburndale	Callaway	Delray Beach	Greensboro
Aventura	Campbellton	Deltona	Greenwood
Bartow	Cape Canaveral	Destin	Gretna
Bascom	Cape Coral	Doral	Groveland
Bay Harbor Islands	Caryville	Dunedin	Gulf Breeze
Bay Lake	Casselberry	Dunnellon	Gulf Stream
Bell	Center Hill	Eagle Lake	Haines City
Belle Glade	Chattahoochee	Edgewater	Hallandale Beach
Belle Isle	Chipley	Estero	Hampton
Belleair	Cinco Bayou	Eustis	Haverhill
Belleair Beach	Clearwater	Everglades City	Hawthorne
Belleair Bluffs	Clermont	Fellsmere	Hialeah Gardens
Belleair Shore	Clewiston	Fernandina Beach	High Springs
Bellevue	Cloud Lake	Flagler Beach	Highland Beach
Beverly Beach	Cocoa	Fort Lauderdale	Hillcrest Heights
Biscayne Park	Cocoa Beach	Fort Meade	Hilliard
Blountstown	Coconut Creek	Fort Myers Beach	Hillsboro Beach
Boca Raton	Cooper City	Fort Pierce	Holly Hill
Bonifay	Coral Gables	Fort Walton Beach	Hollywood
Bonita Springs	Coral Springs	Fort White	Holmes Beach
Bowling Green	Cottondale	Freeport	Homestead
Boynton Beach	Crestview	Frostproof	Horseshoe Beach
Bradenton	Cross City	Fruitland Park	Hypoluxo
Bradenton Beach	Crystal River		Indialantic

2019 CITYSTATS RESPONDENTS

Indian Creek	Lake Park	Mascotte	Ocean Breeze
Indian Harbour Beach	Lake Placid	McIntosh	Ocean Ridge
Indian River Shores	Lake Wales	Melbourne	Ocoee
Indian Rocks Beach	Lake Worth Beach	Melbourne Beach	Okeechobee
Indian Shores	Lakeland	Melbourne Village	Oldsmar
Indiantown	Lantana	Mexico Beach	Opa-locka
Interlachen	Largo	Miami	Orange City
Inverness	Lauderdale Lakes	Miami Lakes	Orange Park
Islamorada, Village of Islands	Lauderdale-By-The-Sea	Miami Shores	Orchid
Jacksonville Beach	Lauderhill	Miami Springs	Orlando
Jacob City	Laurel Hill	Micanopy	Ormond Beach
Jasper	Layton	Milton	Otter Creek
Jay	Lee	Miramar	Oviedo
Juno Beach	Leesburg	Monticello	Pahokee
Jupiter	Lighthouse Point	Montverde	Palatka
Jupiter Inlet Colony	Live Oak	Mount Dora	Palm Bay
Jupiter Island	Longboat Key	Mulberry	Palm Beach
Kenneth City	Longwood	Naples	Palm Beach Gardens
Key Biscayne	Loxahatchee Groves	Neptune Beach	Palm Beach Shores
Key Colony Beach	Lynn Haven	New Port Richey	Palm Coast
Key West	Macclenny	New Smyrna Beach	Palm Springs
Keystone Heights	Madison	Newberry	Palmetto
Kissimmee	Maitland	Niceville	Panama City
La Crosse	Malabar	Noma	Panama City Beach
LaBelle	Malone	North Bay Village	Parker
Lady Lake	Manalapan	North Lauderdale	Parkland
Lake Alfred	Mangonia Park	North Miami Beach	Pembroke Park
Lake Butler	Marathon	North Palm Beach	Pembroke Pines
Lake City	Marco Island	North Port	Penney Farms
Lake Hamilton	Margate	Oak Hill	Pensacola
Lake Helen	Marianna	Oakland	Perry
Lake Mary	Marineland	Oakland Park	Pierson
	Mary Esther	Ocala	Pinecrest

2019 CITYSTATS RESPONDENTS

Pinellas Park	South Pasadena	Wellington
Plant City	Southwest Ranches	West Melbourne
Plantation	St. Augustine	Weston
Polk City	St. Augustine Beach	Wewahitchka
Pomona Park	St. Cloud	White Springs
Pompano Beach	St. Leo	Wildwood
Ponce De Leon	St. Lucie Village	Williston
Ponce Inlet	St. Marks	Wilton Manors
Port Orange	St. Pete Beach	Windermere
Port Richey	St. Petersburg	Winter Garden
Port St. Joe	Starke	Winter Haven
Port St. Lucie	Stuart	Winter Park
Punta Gorda	Sunrise	Winter Springs
Reddick	Surfside	Worthington Springs
Redington Shores	Tallahassee	Yankeetown
Riviera Beach	Tamarac	Zephyrhills
Rockledge	Tampa	Zolfo Springs
Royal Palm Beach	Tarpon Springs	
Safety Harbor	Tavares	
Sanford	Temple Terrace	
Sanibel	Tequesta	
Sarasota	Titusville	
Satellite Beach	Treasure Island	
Sebastian	Trenton	
Sebring	Umatilla	
Seminole	Valparaiso	
Sewall's Point	Venice	
Shalimar	Vernon	
Sneads	Virginia Gardens	
Sopchoppy	Wauchula	
South Bay	Wausau	
South Daytona	Webster	
South Palm Beach	Weeki Wachee	

CENTER FOR MUNICIPAL RESEARCH

About the Florida League of Cities Center for Municipal Research

The Center is the primary source of local government research and resources at the Florida League of Cities. It serves as a link between Florida's public policy researchers and municipal governments, bridging the gap between academics and public policymakers and administrators. The Center conducts multiple surveys annually, the cornerstone being the CityStats survey.

CityStats Survey

Unless otherwise noted, all information included in the State of the Cities is from Florida League of Cities' CityStats surveys, 2011-2019, and 2015-2019 MiniSurvey series.

The FLC Center for Municipal Research has conducted the CityStats survey since 2011. The survey consists of approximately 40 questions about municipal operations, budgets, policies and services. In 2019, surveys were collected from 346 of Florida's 412 municipalities, equaling 84 percent of all cities and 80 percent of the total statewide municipal population.

The Center's MiniSurvey series is intended to gather pertinent, targeted data on a narrow topic through a brief 5-10 question format. MiniSurveys are sent electronically to all 412 Florida cities with varying response rates.

Copies of the survey questions and lists of respondents are available upon request. Individual municipal profiles and the League's "Find a Peer City" database are available for viewing on the League's website flcities.com under the Research & Resources tab.

Florida League of Cities Center for Municipal Research

PO Box 1757, Tallahassee, FL 32302-1757

flcities.com

